

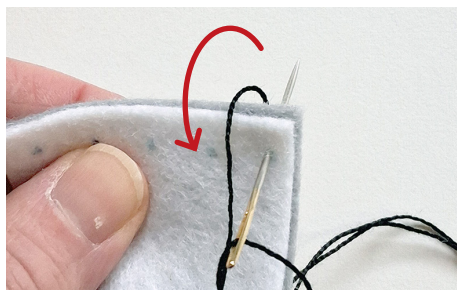
# Blanket Stitch

Blanket Stitch is a beautiful stitch and as the name suggests was traditionally used to sew around the edges of blankets finishing off the raw edges. It is one of those stitches which is essential to learn and it will be very useful in future craft projects. To start thread your needle with embroidery thread and tie a knot in the end.

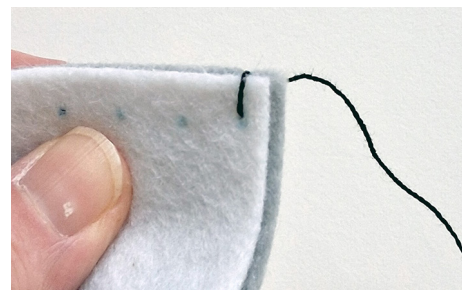
**Step 1** - Insert your needle between the felt layers and come out through the back.



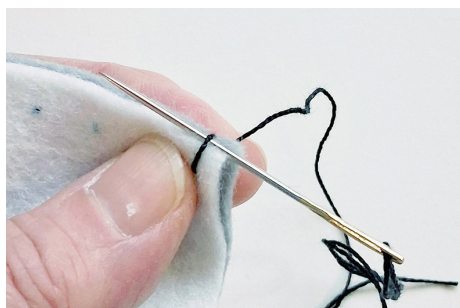
**Step 2** - Now, bring the needle over the top and insert it on the front. Come out next to the first point.



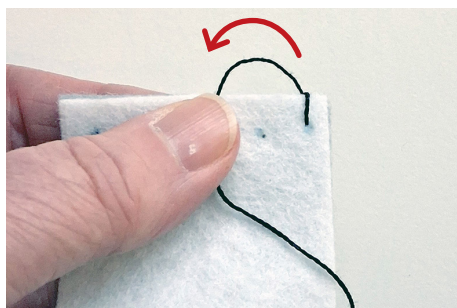
**Step 3** - You have formed an anchor stitch that secures the thread to the felt.



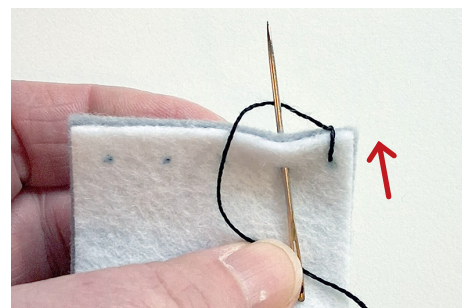
**Step 4** - Next, insert the needle under the anchor stitch along the edge of the felt in the direction you are going to sew.



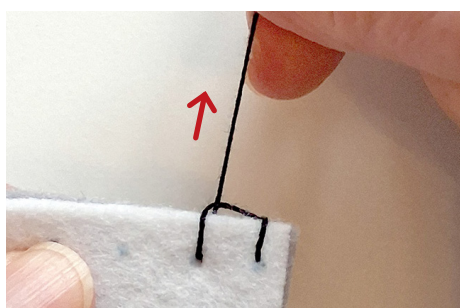
**Step 5** - Create a loop of thread in the direction you are sewing. Hold it in place with your finger.



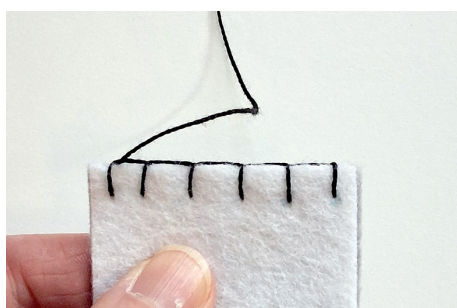
**Step 6** - Bring the needle through the felt layers from front to back. Make sure the needle goes over the loop thread.



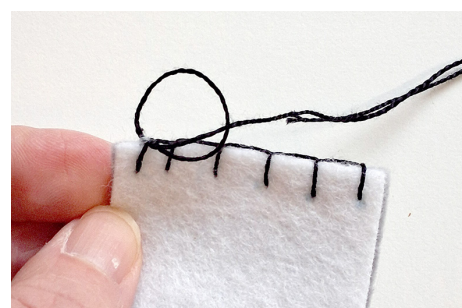
**Step 7** - Pull the thread taut to form the first Blanket Stitch.



**Step 8** - Repeat sewing steps 5, 6 and 7 to form a row of Blanket Stitches.



**Step 9** - To finish the row, form a loop of thread and insert your needle through it. Then pull to knot the thread.



**10.** Finally, insert the needle between the layers of felt and out through the front and snip off the thread.

